



Customer: Restorative CBD

Address: 422 S. Madison Drive, #2
Tempe, AZ 85281

Sample ID: 1000mg Natural Tincture

Matrix: Tincture

Labnumber: 21K0214-01 Total mass or volume per unit (g or mL): 30

Density (g/mL): .9536

Cannabinoid Profile

Test Conditions: 20°C

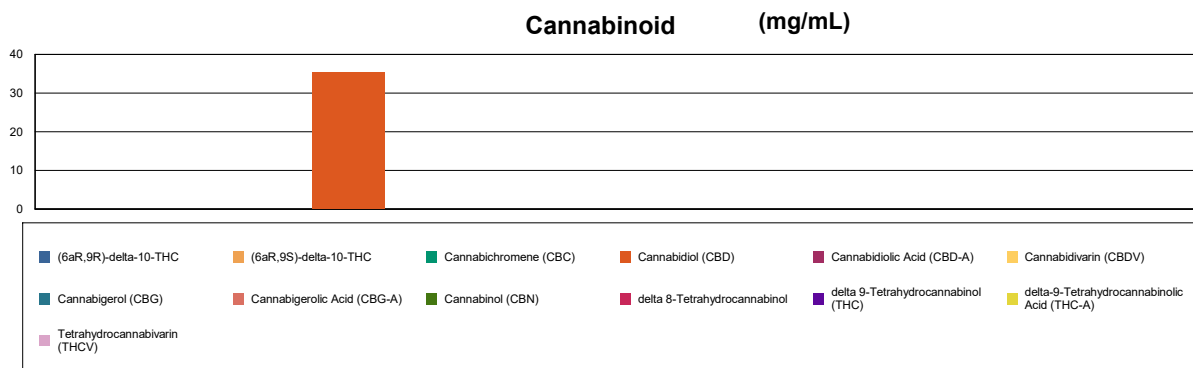
Extraction Technician: SH

Analytical Chemist: SH

Extraction Date(s)	Analysis Date(s)
11/29/2021	11/29/2021

Cannabinoids (HPLC)		Results		
	LOD (mg/mL)	%	mg/mL	mg/Bottle
Cannabidiol (CBD)	<0.20	3.54	35.4	1060
Tetrahydrocannabivarin (THCV)	<0.20			
Cannabinol (CBN)	<0.20			
Cannabichromene (CBC)	<0.20			
delta 9-Tetrahydrocannabinol (THC)	<0.20			
delta-9-Tetrahydrocannabinolic Acid (THC-A)	<0.40			
delta 8-Tetrahydrocannabinol	<0.20			
(6aR,9S)-delta-10-THC	<0.40			
(6aR,9R)-delta-10-THC	<0.40			
Cannabinoids Total		%	mg/mL	
Max Active THC (delta-9-tetrahydrocannabinol)		<0.02	<0.20	
Max Active CBD		3.54	35.40	
T.Active Cannabinoids		3.54	35.40	
Total Cannabinoids		3.54	35.40	

Following USDA guidelines on uncertainty, Altitude Consulting's uncertainty is calculated to be +/- 2% for all cannabinoids using a coverage factor of 2 (95% confidence interval). Measurement uncertainty has not been factored into reported values.
Blank results indicate the compound was below the limit of detection.



[Signature]

Gary Brook - Laboratory Director - 11/30/2021

Reporting Limits will vary based on sample extraction weight used for the analysis.

The results of this report are based solely on the sample submitted and cannot be reproduced. Decision Rule: Measurement uncertainty is not accounted for in the reported values.

Results are based solely on calculated numbers. Altitude Consulting makes no Statements of conformity. **Pesticide, metal, and microbial analyses are subcontracted to ISO 17025 laboratories.**



Customer: Restorative CBD

Address: 422 S. Madison Drive, #2
Tempe, AZ 85281

Sample ID: 1000mg Peppermint Tincture

Matrix: Tincture

Labnumber: 21K0214-02 Total mass or volume per unit (g or mL): 30

Density (g/mL): .9536

Cannabinoid Profile

Test Conditions: 20°C

Extraction Technician: SH

Analytical Chemist: SH

**Extraction
Date(s)**

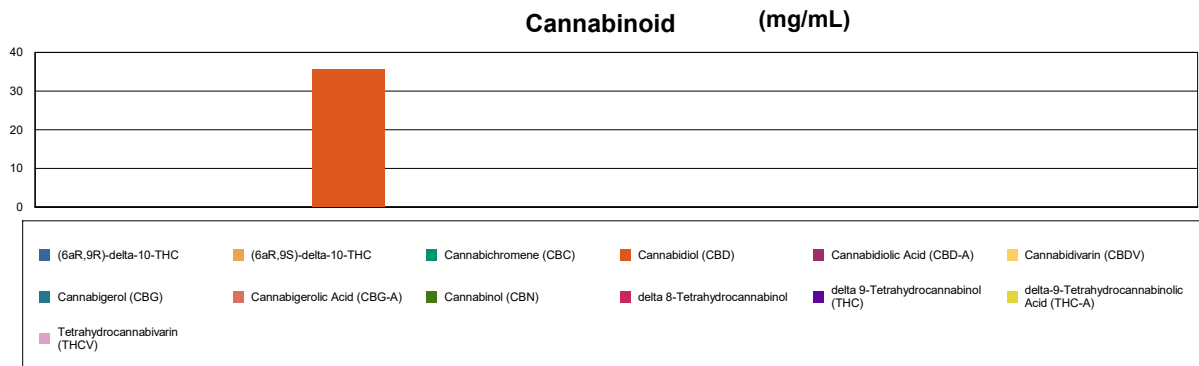
11/29/2021

**Analysis
Date(s)**

11/30/2021

Cannabinoids (HPLC)		Results		
	LOD (mg/mL)	%	mg/mL	mg/Bottle
Cannabidiol (CBD)	<0.20	3.56	35.6	1070
Tetrahydrocannabinol (THC)	<0.20			
Cannabidiol (CBDV)	<0.20			
Cannabidiolic Acid (CBD-A)	<0.20			
Cannabigerol (CBG)	<0.20			
Cannabigerolic Acid (CBG-A)	<0.20			
Cannabichromene (CBC)	<0.20			
delta 9-Tetrahydrocannabinol (THC)	<0.20			
delta-9-Tetrahydrocannabinolic Acid (THC-A)	<0.30			
delta 8-Tetrahydrocannabinol	<0.20			
(6aR,9S)-delta-10-THC	<0.30			
(6aR,9R)-delta-10-THC	<0.30			
Cannabinoids Total		%	mg/mL	
Max Active THC (delta-9-tetrahydrocannabinol)		<0.02	<0.20	
Max Active CBD		3.56	35.60	
T.Active Cannabinoids		3.56	35.60	
Total Cannabinoids		3.56	35.60	

Following USDA guidelines on uncertainty, Altitude Consulting's uncertainty is calculated to be +/- 2% for all cannabinoids using a coverage factor of 2 (95% confidence interval). Measurement uncertainty has not been factored into reported values.
Blank results indicate the compound was below the limit of detection.



[Signature]

Gary Brook - Laboratory Director - 11/30/2021

Reporting Limits will vary based on sample extraction weight used for the analysis.

The results of this report are based solely on the sample submitted and cannot be reproduced. Decision Rule: Measurement uncertainty is not accounted for in the reported values.
Results are based solely on calculated numbers. Altitude Consulting makes no Statements of conformity. **Pesticide, metal, and microbial analyses are subcontracted to ISO 17025 laboratories.**



Customer: Restorative CBD
Address: 422 S. Madison Drive, #2
Tempe, AZ 85281
Sample ID: 1000mg Lemon Tincture
Matrix: Tincture
Labnumber: 21K0214-03

Total mass or volume per unit (g or mL): 30

Density (g/mL): .9536

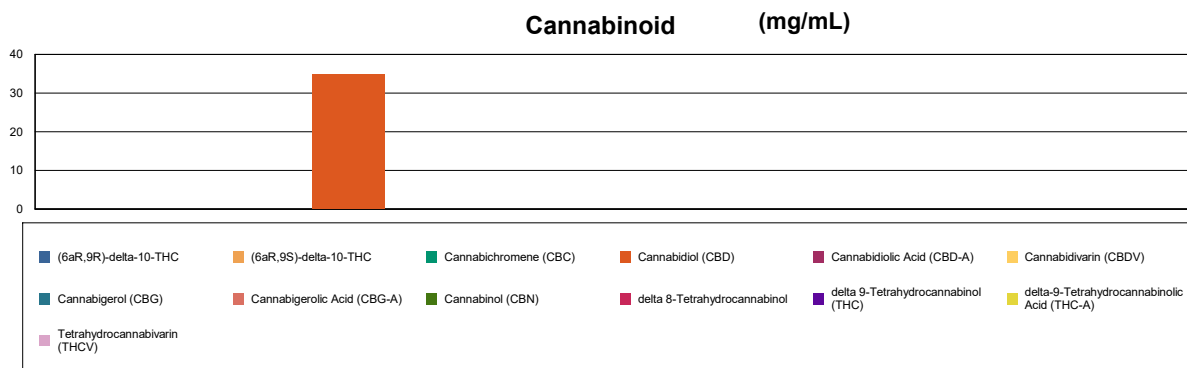
Cannabinoid Profile

Test Conditions: 20°C
Extraction Technician: SH
Analytical Chemist: SH

Extraction Date(s)	Analysis Date(s)
11/29/2021	11/30/2021

Cannabinoids (HPLC)	Results			
	LOD (mg/mL)	%	mg/mL	mg/Bottle
Cannabidiol (CBD)	<0.20	3.49	34.9	1050
Tetrahydrocannabivarin (THCV)	<0.20			
Cannabinol (CBN)	<0.20			
Cannabichromene (CBC)	<0.20			
delta 9-Tetrahydrocannabinol (THC)	<0.20			
delta-9-Tetrahydrocannabinolic Acid (THC-A)	<0.40			
delta 8-Tetrahydrocannabinol	<0.20			
(6aR,9S)-delta-10-THC	<0.40			
(6aR,9R)-delta-10-THC	<0.40			
Cannabinoids Total		%	mg/mL	
Max Active THC (delta-9-tetrahydrocannabinol)		<0.02	<0.20	
Max Active CBD		3.49	34.90	
T.Active Cannabinoids		3.49	34.90	
Total Cannabinoids		3.49	34.90	

Following USDA guidelines on uncertainty, Altitude Consulting's uncertainty is calculated to be +/- 2% for all cannabinoids using a coverage factor of 2 (95% confidence interval). Measurement uncertainty has not been factored into reported values.
Blank results indicate the compound was below the limit of detection.



[Signature]

Gary Brook - Laboratory Director - 11/30/2021

Reporting Limits will vary based on sample extraction weight used for the analysis.

The results of this report are based solely on the sample submitted and cannot be reproduced. Decision Rule: Measurement uncertainty is not accounted for in the reported values.

Results are based solely on calculated numbers. Altitude Consulting makes no Statements of conformity. **Pesticide, metal, and microbial analyses are subcontracted to ISO 17025 laboratories.**



Customer: Restorative CBD

Address: 422 S. Madison Drive, #2
Tempe, AZ 85281

Sample ID: 1500mg Natural Tincture

Matrix: Tincture

Labnumber: 21K0214-04 Total mass or volume per unit (g or mL): 30

Density (g/mL): .9536

Cannabinoid Profile

Test Conditions: 20°C

Extraction Technician: SH

Analytical Chemist: SH

Extraction
Date(s)

11/29/2021

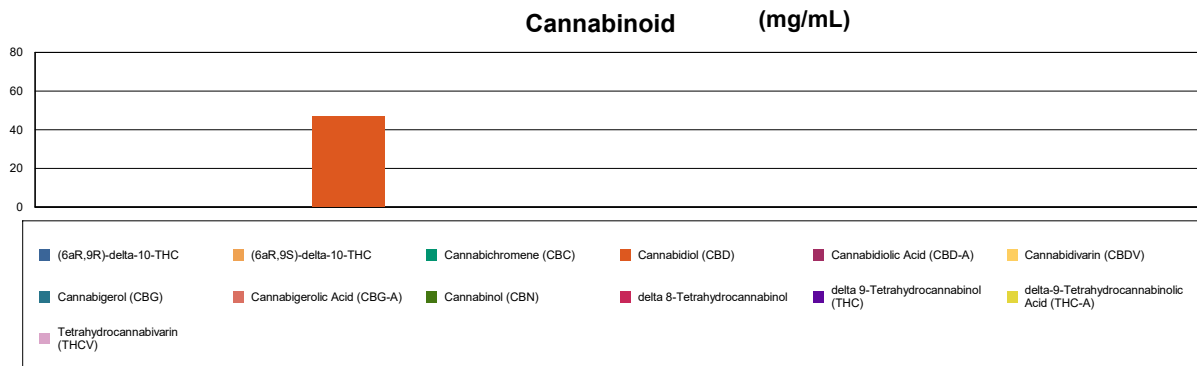
Analysis
Date(s)

11/30/2021

Cannabinoids (HPLC)		Results		
	LOD (mg/mL)	%	mg/mL	mg/Bottle
Cannabidiol (CBD)	<0.20	5.01	50.1	1503
Tetrahydrocannabinol (THC)	<0.20			
Cannabidiol (CBDV)	<0.20			
Cannabidiolic Acid (CBD-A)	<0.20			
Cannabigerol (CBG)	<0.20			
Cannabigerol (CBG)	<0.20			
Cannabidiol (CBD)	<0.20			
Tetrahydrocannabinol (THC)	<0.20			
Cannabinol (CBN)	<0.20			
Cannabichromene (CBC)	<0.20			
delta 9-Tetrahydrocannabinol (THC)	<0.20			
delta-9-Tetrahydrocannabinolic Acid (THC-A)	<0.30			
delta 8-Tetrahydrocannabinol	<0.20			
(6aR,9S)-delta-10-THC	<0.30			
(6aR,9R)-delta-10-THC	<0.30			
Cannabinoids Total		%	mg/mL	
Max Active THC (delta-9-tetrahydrocannabinol)		<0.02	<0.20	
Max Active CBD		5.01	50.10	
T.Active Cannabinoids		5.01	50.10	
Total Cannabinoids		5.01	50.10	

Following USDA guidelines on uncertainty, Altitude Consulting's uncertainty is calculated to be +/- 2% for all cannabinoids using a coverage factor of 2 (95% confidence interval). Measurement uncertainty has not been factored into reported values.

Blank results indicate the compound was below the limit of detection.



[Signature]

Gary Brook - Laboratory Director - 11/30/2021

Reporting Limits will vary based on sample extraction weight used for the analysis.

The results of this report are based solely on the sample submitted and cannot be reproduced. Decision Rule: Measurement uncertainty is not accounted for in the reported values.

Results are based solely on calculated numbers. Altitude Consulting makes no Statements of conformity. Pesticide, metal, and microbial analyses are subcontracted to ISO

17025 laboratories.



Customer: Restorative CBD

Address: 422 S. Madison Drive, #2
Tempe, AZ 85281

Sample ID: 1500mg Peppermint Tincture

Matrix: Tincture

Labnumber: 21K0214-05 Total mass or volume per unit (g or mL): 30

Density (g/mL): .9536

Cannabinoid Profile

Test Conditions: 20°C

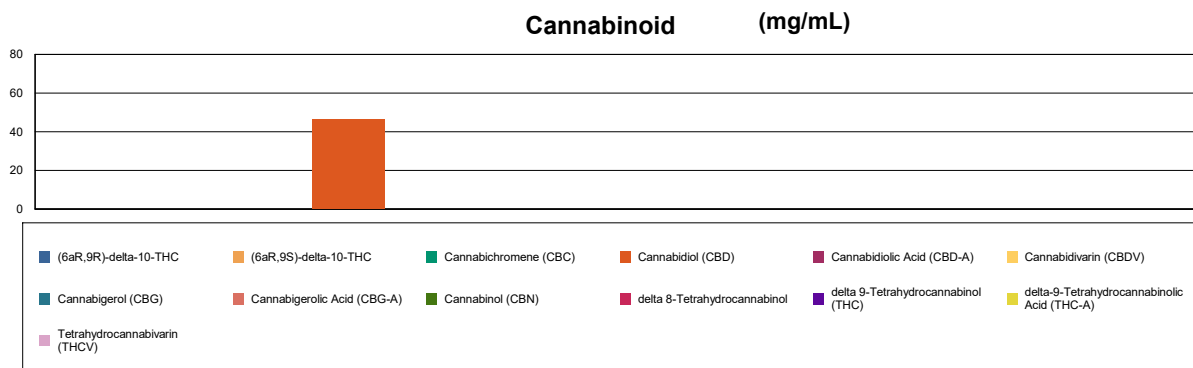
Extraction Technician: SH

Analytical Chemist: SH

Extraction Date(s)	Analysis Date(s)
11/29/2021	11/30/2021

Cannabinoids (HPLC)		Results		
	LOD (mg/mL)	%	mg/mL	mg/Bottle
Cannabidiol (CBD)	<0.20	5.10	51.0	1530
Tetrahydrocannabinol (THC)	<0.20			
Cannabidiol (CBDV)	<0.20			
Cannabidiolic Acid (CBD-A)	<0.20			
Cannabigerol (CBG)	<0.20			
Cannabigerolic Acid (CBG-A)	<0.20			
Cannabichromene (CBC)	<0.20			
delta 9-Tetrahydrocannabinol (THC)	<0.20			
delta-9-Tetrahydrocannabinolic Acid (THC-A)	<0.40			
delta 8-Tetrahydrocannabinol	<0.20			
(6aR,9S)-delta-10-THC	<0.40			
(6aR,9R)-delta-10-THC	<0.40			
Cannabinoids Total		%	mg/mL	
Max Active THC (delta-9-tetrahydrocannabinol)		<0.02	<0.20	
Max Active CBD		5.10	51.00	
T.Active Cannabinoids		5.10	51.00	
Total Cannabinoids		5.10	51.00	

Following USDA guidelines on uncertainty, Altitude Consulting's uncertainty is calculated to be +/- 2% for all cannabinoids using a coverage factor of 2 (95% confidence interval). Measurement uncertainty has not been factored into reported values.
Blank results indicate the compound was below the limit of detection.



[Signature]

Gary Brook - Laboratory Director - 11/30/2021

Reporting Limits will vary based on sample extraction weight used for the analysis.

The results of this report are based solely on the sample submitted and cannot be reproduced. Decision Rule: Measurement uncertainty is not accounted for in the reported values.

Results are based solely on calculated numbers. Altitude Consulting makes no Statements of conformity. **Pesticide, metal, and microbial analyses are subcontracted to ISO 17025 laboratories.**



Customer: Restorative CBD

Address: 422 S. Madison Drive, #2
Tempe, AZ 85281

Sample ID: 1500mg Lemon Tincture

Matrix: Tincture

Labnumber: 21K0214-06 Total mass or volume per unit (g or mL): 30

Density (g/mL): .9536

Cannabinoid Profile

Test Conditions: 20°C

Extraction Technician: SH

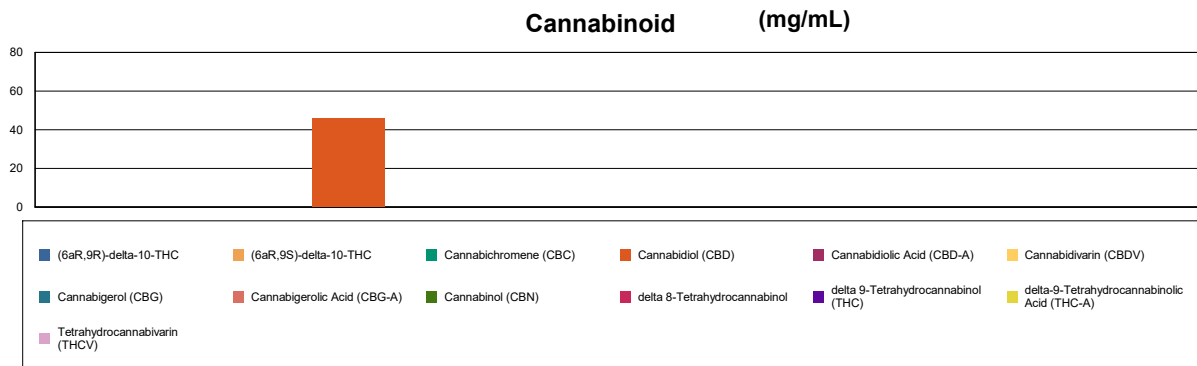
Analytical Chemist: SH

Extraction Date(s)	Analysis Date(s)
11/29/2021	11/30/2021

Cannabinoids (HPLC)		Results		
	LOD (mg/mL)	%	mg/mL	mg/Bottle
Cannabidiol (CBD)	<0.20	4.99	49.9	1497
Tetrahydrocannabinol (THC)	<0.20			
Cannabidiol (CBDV)	<0.20			
Cannabidiolic Acid (CBD-A)	<0.20			
Cannabigerolic Acid (CBG-A)	<0.20			
Cannabigerol (CBG)	<0.20			
Cannabichromene (CBC)	<0.20			
delta 9-Tetrahydrocannabinol (THC)	<0.20			
delta-9-Tetrahydrocannabinolic Acid (THC-A)	<0.30			
delta 8-Tetrahydrocannabinol	<0.20			
(6aR,9S)-delta-10-THC	<0.30			
(6aR,9R)-delta-10-THC	<0.30			
Cannabinoids Total		%	mg/mL	
Max Active THC (delta-9-tetrahydrocannabinol)		<0.02	<0.20	
Max Active CBD		4.99	49.90	
T.Active Cannabinoids		4.99	49.90	
Total Cannabinoids		4.99	49.90	

Following USDA guidelines on uncertainty, Altitude Consulting's uncertainty is calculated to be +/- 2% for all cannabinoids using a coverage factor of 2 (95% confidence interval). Measurement uncertainty has not been factored into reported values.

Blank results indicate the compound was below the limit of detection.



[Signature]

Gary Brook - Laboratory Director - 11/30/2021

Reporting Limits will vary based on sample extraction weight used for the analysis.

The results of this report are based solely on the sample submitted and cannot be reproduced. Decision Rule: Measurement uncertainty is not accounted for in the reported values.

Results are based solely on calculated numbers. Altitude Consulting makes no Statements of conformity. **Pesticide, metal, and microbial analyses are subcontracted to ISO**

17025 laboratories.