

3262 S Platte River Drive, Englewood CO 80110 • Ph: 303.390.1662 • Email: contact@AltitudeConsultingllc.com



Customer: Restorative CBD

Address: 422 S. Madison Drive, #2
Tempe, AZ 85281

Sample ID: 1000mg Full Spec Peppermint Tincture

Matrix: Tincture

Labnumber: 21K0214-11 Total mass or volume per unit (g or mL): 30

Density (g/mL): .9536

Cannabinoid Profile

Test Conditions: 20°C

Extraction Technician: SH

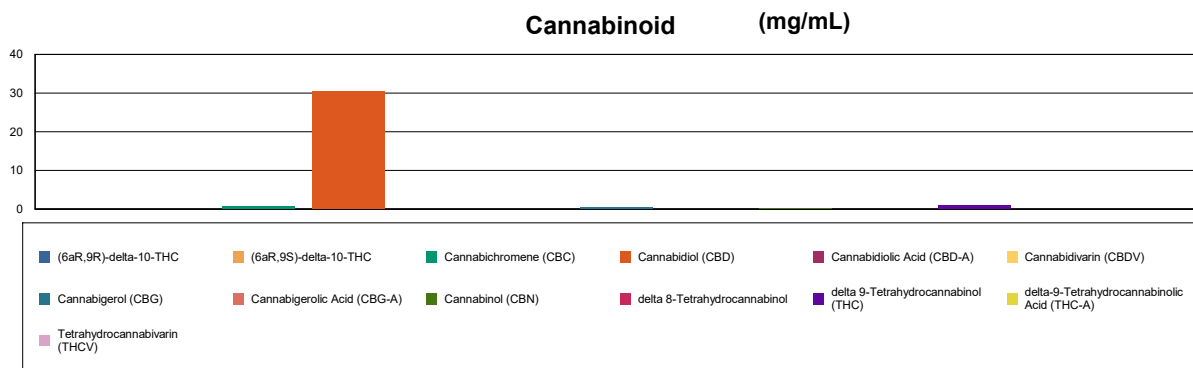
Analytical Chemist: SH

Extraction Date(s)	Analysis Date(s)
11/29/2021	11/30/2021

Cannabinoids (HPLC)		Results		
	LOD (mg/mL)	%	mg/mL	mg/Bottle
Cannabidiol (CBD)	<0.20			
Cannabidiol (CBD)	<0.20			
Cannabigerol (CBG)	<0.20			
Cannabigerol (CBG)		0.03	0.339	10.2
Cannabidiol (CBD)		3.17	31.7	914
Tetrahydrocannabivarin (THCV)	<0.20			
Cannabinol (CBN)		0.02	0.153	4.60
Cannabichromene (CBC)		0.06	0.573	17.2
delta 9-Tetrahydrocannabinol (THC)		0.08	0.807	24.2
delta-9-Tetrahydrocannabinolic Acid (THC-A)	<0.30			
delta 8-Tetrahydrocannabinol	<0.20			
(6aR,9S)-delta-10-THC	<0.30			
(6aR,9R)-delta-10-THC	<0.30			
Cannabinoids Total		%	mg/mL	
Max Active THC (delta-9-tetrahydrocannabinol)		0.08	0.81	
Max Active CBD		3.17	31.70	
T.Active Cannabinoids		3.36	33.60	
Total Cannabinoids		3.36	33.60	

Following USDA guidelines on uncertainty, Altitude Consulting's uncertainty is calculated to be +/- 2% for all cannabinoids using a coverage factor of 2 (95% confidence interval). Measurement uncertainty has not been factored into reported values.

Blank results indicate the compound was below the limit of detection.



[Signature]

Gary Brook - Laboratory Director - 11/30/2021

Reporting Limits will vary based on sample extraction weight used for the analysis.

The results of this report are based solely on the sample submitted and cannot be reproduced. Decision Rule: Measurement uncertainty is not accounted for in the reported values.

Results are based solely on calculated numbers. Altitude Consulting makes no Statements of conformity. Pesticide, metal, and microbial analyses are subcontracted to ISO

17025 laboratories.

3262 S Platte River Drive, Englewood CO 80110 • Ph: 303.390.1662 • Email: contact@AltitudeConsultingllc.com



Customer: Restorative CBD

Address: 422 S. Madison Drive, #2
Tempe, AZ 85281

Sample ID: 1500mg Full Spec Peppermint Tincture

Matrix: Tincture

Labnumber: 21K0214-14 Total mass or volume per unit (g or mL): 30

Density (g/mL): .9536

Cannabinoid Profile

Test Conditions: 20°C

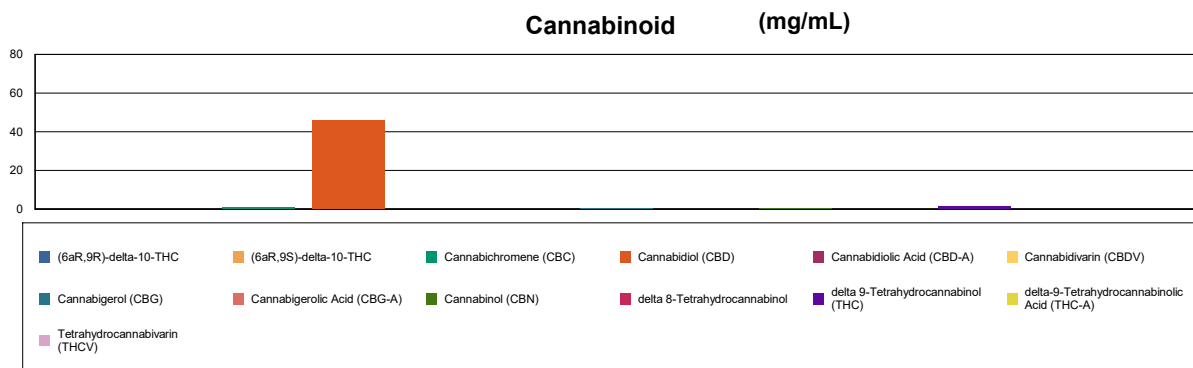
Extraction Technician: SH

Analytical Chemist: SH

Extraction Date(s)	Analysis Date(s)
11/29/2021	11/30/2021

Cannabinoids (HPLC)		Results		
	LOD (mg/mL)	%	mg/mL	mg/Bottle
Cannabidivarin (CBDV)	<0.20			
Cannabidiolic Acid (CBD-A)	<0.20			
Cannabigerolic Acid (CBG-A)	<0.20			
Cannabigerol (CBG)		0.04	0.445	13.3
Cannabidiol (CBD)		4.72	47.2	1416
Tetrahydrocannabivarin (THCV)	<0.20			
Cannabinol (CBN)		0.02	0.231	6.94
Cannabichromene (CBC)		0.09	0.885	26.6
delta 9-Tetrahydrocannabinol (THC)		0.13	1.25	37.5
delta-9-Tetrahydrocannabinolic Acid (THC-A)	<0.40			
delta 8-Tetrahydrocannabinol	<0.20			
(6aR,9S)-delta-10-THC	<0.40			
(6aR,9R)-delta-10-THC	<0.40			
Cannabinoids Total		%	mg/mL	
Max Active THC (delta-9-tetrahydrocannabinol)		0.13	1.25	
Max Active CBD		4.72	47.20	
T.Active Cannabinoids		5.00	50.00	
Total Cannabinoids		5.00	50.00	

Following USDA guidelines on uncertainty, Altitude Consulting's uncertainty is calculated to be +/- 2% for all cannabinoids using a coverage factor of 2 (95% confidence interval). Measurement uncertainty has not been factored into reported values.
Blank results indicate the compound was below the limit of detection.



[Signature]

Gary Brook - Laboratory Director - 11/30/2021

Reporting Limits will vary based on sample extraction weight used for the analysis.

The results of this report are based solely on the sample submitted and cannot be reproduced. Decision Rule: Measurement uncertainty is not accounted for in the reported values.

Results are based solely on calculated numbers. Altitude Consulting makes no Statements of conformity. Pesticide, metal, and microbial analyses are subcontracted to ISO 17025 laboratories.



Customer: Restorative CBD

Address: 422 S. Madison Drive, #2
Tempe, AZ 85281

Sample ID: 1500mg Full Spec Lemon Tincture

Matrix: Tincture

Labnumber: 21K0214-15 Total mass or volume per unit (g or mL): 30

Density (g/mL): .9536

Cannabinoid Profile

Test Conditions: 20°C

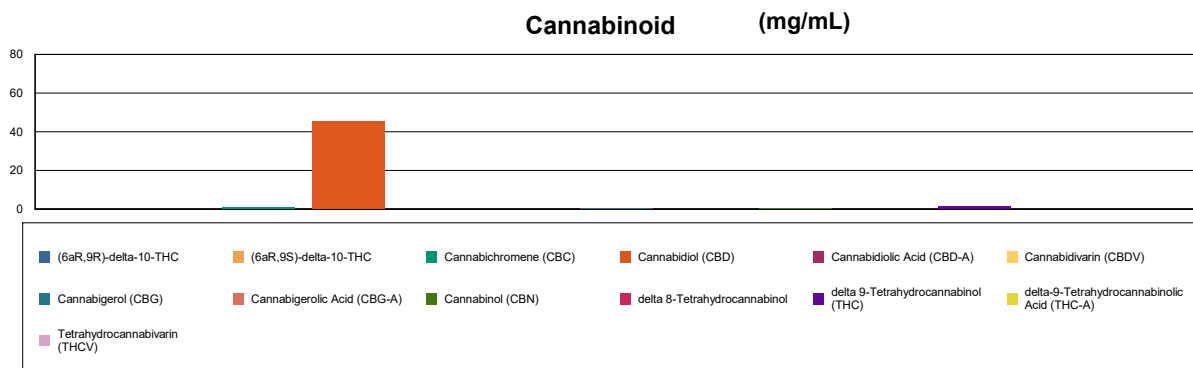
Extraction Technician: SH

Analytical Chemist: SH

Extraction Date(s)	Analysis Date(s)
11/29/2021	11/30/2021

Cannabinoids (HPLC)		Results		
	LOD (mg/mL)	%	mg/mL	mg/Bottle
Cannabidiol (CBD)	<0.20			
Cannabidiol (CBD)	<0.20			
Cannabidiol (CBD)	<0.20			
Cannabidiol (CBD)		0.04	0.447	13.4
Cannabidiol (CBD)		4.56	45.6	1368
Tetrahydrocannabinol (THC)	<0.20			
Cannabinol (CBN)		0.02	0.231	6.92
Cannabichromene (CBC)		0.09	0.855	25.6
delta 9-Tetrahydrocannabinol (THC)		0.13	1.25	37.5
delta-9-Tetrahydrocannabinolic Acid (THC-A)	<0.30			
delta 8-Tetrahydrocannabinol	<0.20			
(6aR,9S)-delta-10-THC	<0.30			
(6aR,9R)-delta-10-THC	<0.30			
Cannabinoids Total		%	mg/mL	
Max Active THC (delta-9-tetrahydrocannabinol)		0.13	1.25	
Max Active CBD		4.56	45.60	
T.Active Cannabinoids		4.84	48.40	
Total Cannabinoids		4.84	48.40	

Following USDA guidelines on uncertainty, Altitude Consulting's uncertainty is calculated to be +/- 2% for all cannabinoids using a coverage factor of 2 (95% confidence interval). Measurement uncertainty has not been factored into reported values.
Blank results indicate the compound was below the limit of detection.



[Signature]

Gary Brook - Laboratory Director - 11/30/2021

Reporting Limits will vary based on sample extraction weight used for the analysis.

The results of this report are based solely on the sample submitted and cannot be reproduced. Decision Rule: Measurement uncertainty is not accounted for in the reported values.

Results are based solely on calculated numbers. Altitude Consulting makes no Statements of conformity. Pesticide, metal, and microbial analyses are subcontracted to ISO

17025 laboratories.